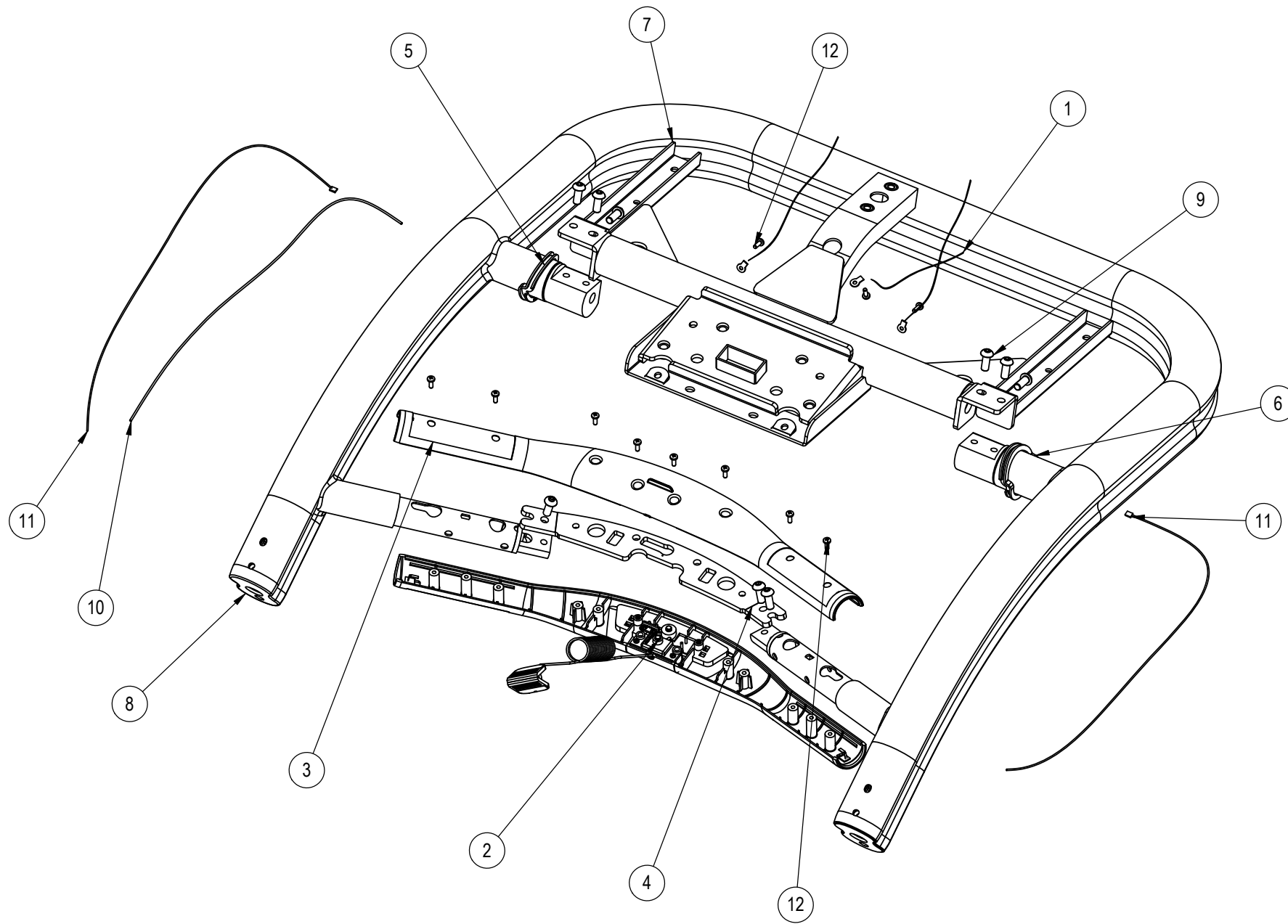


| REVISION HISTORY | | | | |
|------------------|----------|-------------------------------|-------|----|
| REV | DATE | DESCRIPTION | ECO | BY |
| A | 08-01-07 | INITIAL RELEASE OF PRODUCTION | 11699 | SJ |



| ITEM NO. | STAR TRAC P/N | INRAY P/N | DESCRIPTION | Default/ QTY. |
|----------|---------------|--------------|---------------------------------------|---------------|
| 1 | 740-6016 | 740-6016 | Assy, Cable, Generic GND, Sport Tread | 3 |
| 2 | 740-6096 | STDP4000 | ASSY, HOTBAR, UPPER SECTION | 1 |
| 3 | 740-6097 | 740-6097 | ASSY, HOTBAR, LOWER SECTION | 1 |
| 4 | 740-6098 | STDP1500 | PLATE, HOT BAR SUPPORT | 1 |
| 5 | 740-6099 | STDP3311-TRC | GASKET, DISPLA-RAILS, TRC, RIGHT | 1 |
| 6 | 740-6100 | STDP3310-TRC | GASKET, DISPLA-RAILS, TRC LEFT | 1 |
| 7 | 740-6101 | STDP1600 | WELDMENT, DISPLAY STRUCTURE | 1 |
| 8 | 740-6102 | STDP0200JS | HANDRAIL, FRONT, DIP, TRc | 1 |
| 9 | 740-6502 | PNLM8*20*20 | SCREW, PNLM8*20*20 | 9 |
| 10 | 740-6012 | 740-6012 | Assy, Cable, Stop Switch Extension | 1 |
| 11 | 740-6035 | 740-6035 | Assy, Cable, CHR, Sport Tread | 2 |
| 12 | 740-6502 | GB6560M4*12 | SCREW, GB6560M4*12 | 11 |

NOTICE OF PROPRIETARY INFORMATION
 THIS DOCUMENT SHALL NOT BE REPRODUCED NOR SHALL THE INFORMATION CONTAINED HEREIN BE USED BY OR DISCLOSED TO OTHER EXCEPT AS EXPRESSLY AUTHORIZED BY UNISEN INC. D.B.A. STAR TRAC.

DOCUMENT STATUS:
 RELEASE

NOTES:

| CLASS OF WORK | UNLESS OTHERWISE SPECIFIED DIMS ARE IN mm. TOLERANCES FOR MEASURE OF LENGTH ARE: | | | | | | | |
|---------------|--|---------|----------|------------|-------------|--------------|---------------|-------|
| | 0.5 to 3 | >3 to 6 | >6 to 30 | >30 to 120 | >120 to 400 | >400 to 1000 | >1000 to 2000 | >2000 |
| FINE | ±0.05 | ±0.05 | ±0.1 | ±0.15 | ±0.2 | ±0.3 | ±0.5 | ---- |
| MEDIUM | ±0.1 | ±0.1 | ±0.2 | ±0.3 | ±0.5 | ±0.8 | ±1.2 | ±2 |
| COARSE | ±0.2 | ±0.3 | ±0.5 | ±0.8 | ±1.2 | ±2 | ±3 | ±4 |
| VERY COARSE | ---- | ±0.5 | ±1 | ±1.5 | ±2.5 | ±4 | ±6 | ±8 |

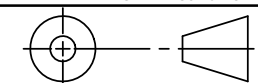
MATERIAL

FINISH

VENDOR:

P/N: 740-6095

THIRD ANGLE PROJECTION



| | | |
|----------|---------|----------|
| DRAWN | INITIAL | DATE |
| | SJ | 07-25-07 |
| CHECKED | | |
| APPROVED | | |

UNISEN, INC. DBA
STAR TRAC
 14410 Myford Road
 Irvine CA 92606

STARTRAC PART NO
740-6095 REV **A**

TITLE
ASSY. HANRAIL & HOTBAR

SCALE: 1:6 | SHEET 1 OF 1 | SHEET SIZE: B